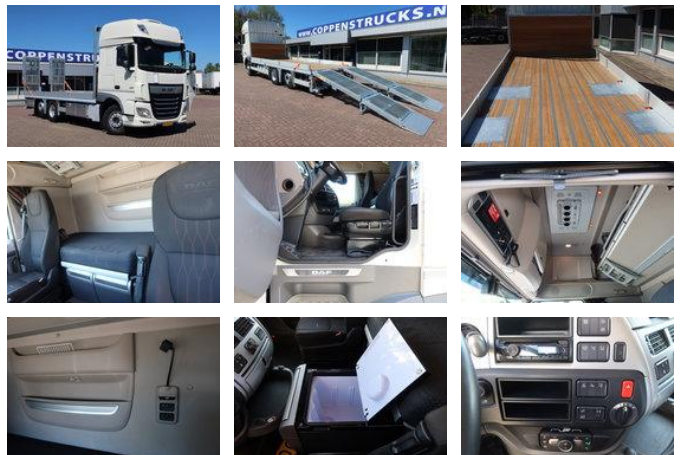




## DAF XF 450 106 XF 450 6x2 Oprijwagen/Machine transport

### General features

Brand	DAF
Model	XF 450
Subcategory	Car transporter
Licence plate	BB-900-N
Odometer reading	570.000km
Construction year	2020
Date of first registration	03-11-2020
Color	White
Condition	Used
Fuel	Diesel
Emission class	Euro 6
Reference	BB-900-N



### Characteristics

Empty weight	11.000kg
Load capacity	15.000kg
GVW	27.000kg
Length	945cm
Width	250cm
Cabin	Sleeper cabin
Door count	2

Cylinder contents

10.837cc

# DAF XF 450 106 XF 450 6x2 Oprijwagen/Machine transport

## Technical specifications

Number of axes	3
Axis configuration	6x2
Transmission	Automatic
Engine output	330

## Description

Height floor 117 cm RVS Toolbox 3 x New back construction Length box 685 cm Width bkox 250 cm

## Accessories

- Central doorlocking
- Lane Assist
- Lock diff
- Coupling Rockinger
- Parking air conditioning / roof air conditioning
- Outside temperature display
- Cruise control
- Anti-lock braking system
- Air conditioning
- Aluminium fuel tank
- Roof spoiler
- Electrically operated windows
- Air horn
- Air suspension
- Radio/CD player
- Retarder
- ASR
- Electrically adjustable exterior mirrors