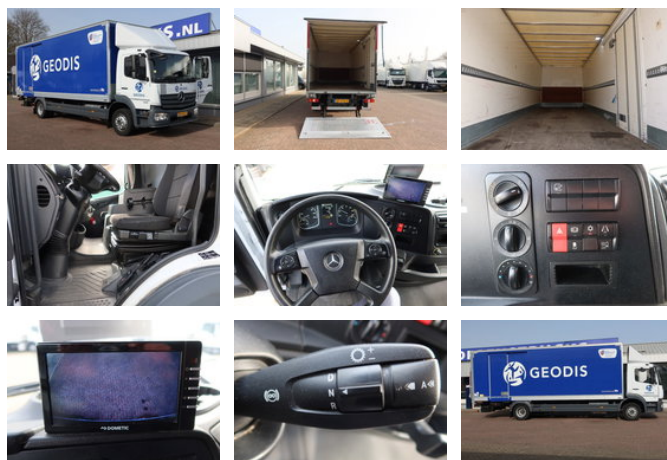




Mercedes-Benz Atego 1218 1218 L Bak+Klep Dhollandia 1500 kg

General features

Brand	Mercedes-Benz
Model	Atego 1218
Subcategory	Box
Odometer reading	313.000km
Construction year	2021
Color	White
Condition	Used
Fuel	Diesel
Emission class	Euro 6
Reference	bd-676-f



Characteristics

Empty weight	7.370kg
Load capacity	4.620kg
GVW	11.990kg
Cabin	No

Mercedes-Benz Atego 1218 1218 L Bak+Klep Dhollandia 1500 kg

Technical specifications

Number of axes	2
Axis configuration	4x2
Transmission	Automatic
Engine output	180hp

Description

Air suspension back

Accessories

- Camera system
- LED lighting cargo area
- Radio
- Rear air suspension
- Outside temperature display
- Cruise control
- Anti-lock braking system
- Air conditioning
- Electrically operated windows
- Heavy duty engine brake
- Side door
- Central doorlocking
- ASR
- Electrically adjustable exterior mirrors