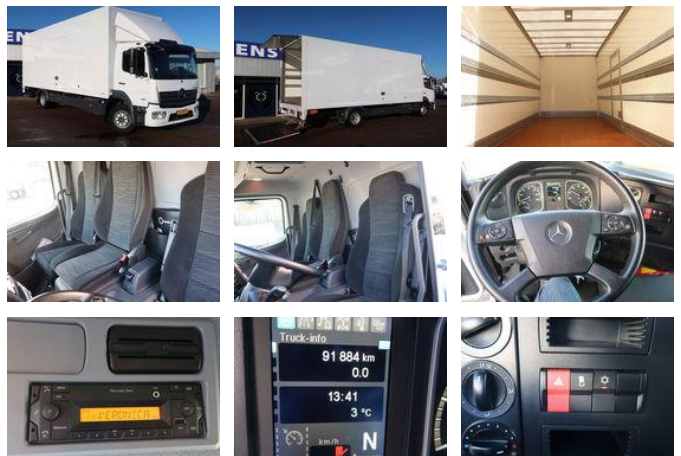




Mercedes-Benz Atego 1321L Bakwagen Laadklep 2000kg / 3 Stoelen!!

General features

Brand	Mercedes-Benz
Subcategory	Box
Odometer reading	91.000km
Construction year	2022
Color	White
Condition	Used
Fuel	Diesel
Emission class	Euro 6
Reference	95-BTH-7



Characteristics

Empty weight	7.389kg
Load capacity	4.601kg
Length	945cm
Width	255cm

Mercedes-Benz Atego 1321L Bakwagen Laadklep 2000kg / 3 Stoelen!!

Technical specifications

Number of axes	2
Axis configuration	4x2
Transmission	Automatic
Engine output	210hp

Description

Tail lift DHollandia 2000kg Willemse bodywork MOT approved until 24.08.2025

Accessories

- LED- lighting
- Radio
- Alarmsysteem class 1
- Binding rails 3 x
- 3 Seats
- Outside temperature display
- Cruise control
- Anti-lock braking system
- Air conditioning
- Roof spoiler
- Electrically operated windows
- Air suspension
- Coupling
- Side door
- Visor
- Central doorlocking
- Heated driver's seat
- ASR
- Electrically adjustable exterior mirrors